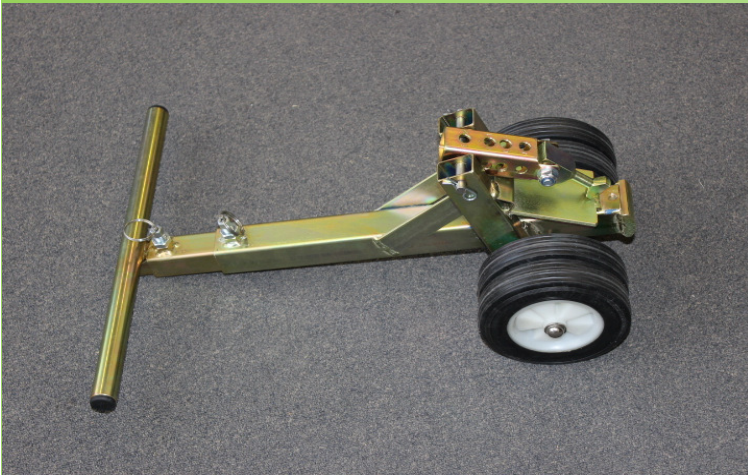




## Compact Manhole Cover Lift

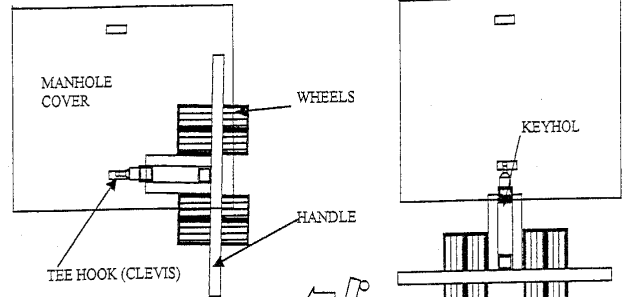
Code: ATM-116120



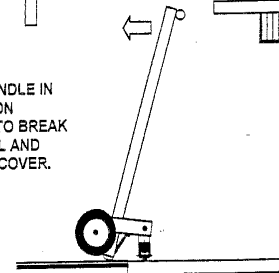
### MANHOLE COVER LIFTER INSTRUCTIONS (116/120)

**STEP 1**  
PLACE LIFTER WITH TEE  
HOOK (CLEVIS) IN  
KEYHOLE AS SHOWN

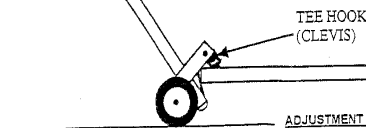
**STEP 2**  
ROTATE LIFTER SO THAT THE TEE  
HOOK IS AT RIGHT ANGLES INSIDE  
THE KEYHOLE



**STEP 3**  
PULL HANDLE IN  
DIRECTION  
SHOWN TO BREAK  
THE SEAL AND  
PICK UP COVER.



**STEP 4**  
CONTINUE TO PULL HANDLE BACK  
& DOWN WARDS UNTIL COVER IS  
LIFTED AND TRANSPORTABLE TO A  
SAFE LOCATION.



ADJUSTMENT OF TEE HOOK (CLEVIS)

Position A — Above the surrounding ground level.  
Position B — At ground level.

Position B1 & B2 — Below the surrounding ground level.



ALL TRADES MANUFACTURING PTY LTD

UNIT 11/5 HUDSON AVENUE, CASTLE HILL NSW 2154

PH - 02 8850 2700 FAX 02 8850 2701

www.all-trades.com.au

email; sales@all-trades.com.au